



BEYOND EMERGING RISKS:
**INNOVATING RESILIENCE AND
ADAPTATION**

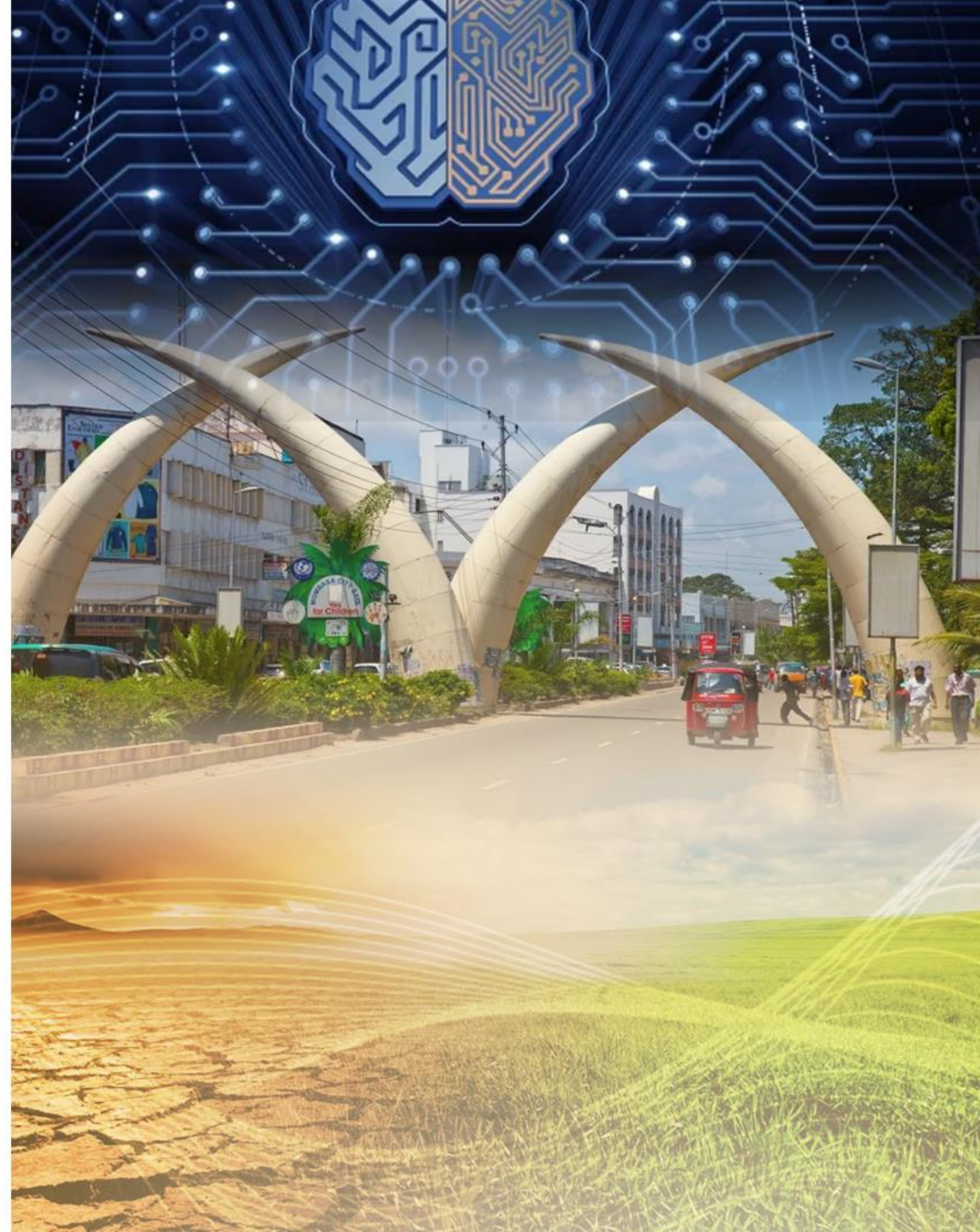
13th to 15th Nov || Mombasa, Kenya 

Masterclass on AI for Actuaries Session 2:

Shikoli Makatiani, Chief Innovation Officer, CVPAI

Lucy Nondi, Actuary, Jubilee Insurance

Sharon Nderi, Caava VantagePoint AI (CVPAI)



AI in Actuarial Workflows: Practical Applications with Sera

Enhancing Efficiency and Accuracy in Actuarial Processes





Introducing Sera – The Actuarial AI Assistant

- Designed to enhance, not replace, actuarial work.
- Supports data processing, risk assessment, and reporting.
- A collaborative AI partner tailored for actuarial workflows.

Session Goals and Engagement Outline



Session Goals:

Demonstrate practical AI applications in actuarial workflows.

Show how Sera enhances efficiency and accuracy.

Emphasize Sera's role as a supportive tool, not a replacement.



Engagement Format:

Interactive demos and Q&A sessions.

Real-world applications and audience reflections.

Streamlining Data Extraction and Cleaning



The Challenge: Data extraction is time-consuming and prone to errors.



Sera's Solution: Automates data extraction and organization.



Expected Impact: Reduces manual effort, enhances accuracy.

Enhancing Risk Assessment Efficiency

- **The Challenge:** Initial risk assessments are time-intensive and often require data synthesis across multiple sources.
- **Sera's Solution:** Automates risk categorization and highlights high-risk areas.
- **Expected Impact:** Enables actuaries to focus on deeper analysis by streamlining preliminary risk assessments.



Instant Insights and On- Demand Reporting with AI



Challenge: Actuaries often need quick access to insights for timely decision-making.



Sera's Solution: Provides real-time reports and answers to queries on demand.

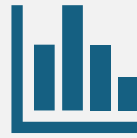


Expected Impact: Enhances responsiveness and supports data-driven decisions.

Bringing Predictive Power to Actuarial Forecasting



Challenge: Forecasting and predictive analysis are resource-intensive and require extensive data.



Sera's Solution: Provides AI-driven predictive insights based on historical data.



Expected Impact: Supports actuaries in making data-driven forecasts for risk and resource planning.



DEMO: Automating Data Handling for Actuarial Efficiency

- **Demo Focus:** Real-time extraction and organization of complex datasets.
- **Key Features:** Accurate data extraction, structured data output, minimal manual intervention.



DEMO: Automating Initial Risk Categorization

- **Demo Focus:** Sera's ability to analyze and categorize risk data in real-time.
- **Key Features:** Quick identification of high-risk areas, streamlined categorization, actionable insights.

DEMO: AI-Powered Forecasting for Future Risk Management

- **Demo Focus:** Sera's predictive models based on historical claims data.
- **Key Features:** Forecasting of loss ratios, claims frequencies, and trends.



DEMO: Generating Actuarial Insights on Demand

- **Demo Focus:** Sera's ability to respond to real-time queries and produce reports.
- **Key Features:** Fast data retrieval, customizable reports, actionable insights.



Looking Ahead: Sera's Future Capabilities



Future Enhancements: Expanded predictive analytics, multi-agent teamwork, advanced risk modeling.



Vision: Develop Sera as a key actuarial partner across diverse workflows.



Roadmap: Continued collaboration with actuaries, incorporating feedback to evolve Sera's capabilities.

Key Takeaways and Final Q&A

- **Sera's Value:** Enhances actuarial efficiency, accuracy, and decision-making.
- **Future Potential:** Continuous development to meet evolving actuarial needs.
- **Q&A:** Open floor for final questions and feedback.

**AI
MASTERCLASS
SESSION 1
MENTIMETER
POLL**

SCAN THIS



OR enter on browser

www.menti.com

**Mentimeter code:
8876 6618**